

Courtyard
 Collection™

Block Shapes

An Overview of the Courtyard Collection Blocks

The Courtyard Collection allows you to build an unlimited variety of projects using five block shapes: the full-sized Dublin, the half-sized York, Corner Blocks, Wall Caps and Post Caps.



Dublin

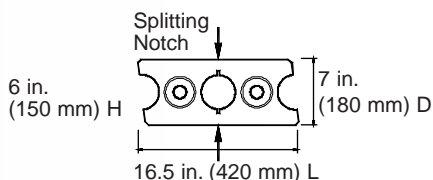
Dublin blocks are the best choice for building straight walls and can be combined with the York blocks to build a variety of patterns. Dublins come in three slightly different styles, one is angled to the right and the other two are angled to the left (shown below). All Dublin blocks have built-in splitting notches to make splitting blocks easy. When building panels with posts or corners, or when transitioning into curved walls, you will need to split blocks to create a straight edge that eliminates gaps.



39 lbs.
(18 kg)

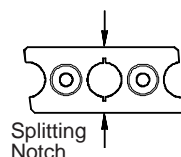
Each pallet includes one Dublin end split block for every two Dublin center split blocks.

Angle right with a center split (As shown with the raised rings up)



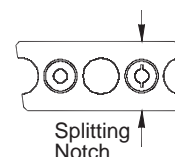
Use as a full size block or split it in 1/2 for transitions.

Angle left with a center split (As shown with the raised rings up)



Use as a full size block or split it in 1/2 for transitions.

Angle left with an end split (As shown with the raised rings up)



Use as a full size block or as a 3/4 and 1/4 block for transitions.

York

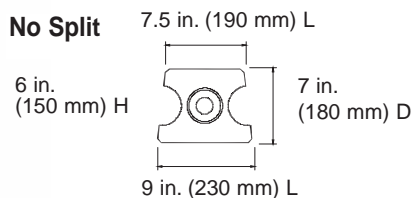
York blocks are needed for building curved walls. To build straight walls just alternate the direction of the York block or combine with Dublin blocks to add variety and random patterns. York blocks come in two slightly different styles; one has a splitting notch in the center and the other does not.

Each pallet includes one York center-split block for every five York blocks without a split.

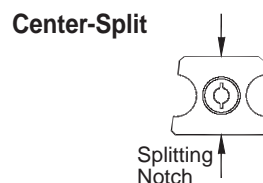
York



20 lbs.
(9 kg)



Use as a full size block



Use as a full size block or split in 1/2 for transitions

Cutting and Splitting Blocks

Splitting and cutting blocks requires a hammer and chisel or a masonry saw. See How-to sheet #210 for more information.



allanblock.com

All specifications are approximate, contact your local distributor for exact dimensions.

For a complete library of Courtyard Collection How-to sheets visit allanblock.com

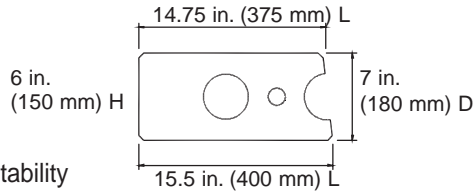
Block Shapes

An Overview of the Courtyard Collection Blocks

Corner Blocks

Use Corner Blocks to:

- Create corners
 See *How-to sheet #180*.
- Create posts
 See *How-to sheet #220*.
- Interlock panels and posts for added stability
 See *How-to sheet #230*.
- Step down or end walls
 See *How-to sheet #160*.



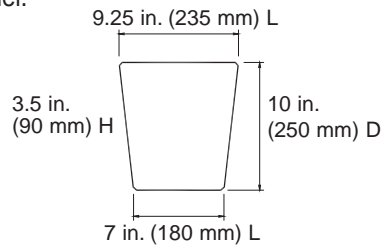
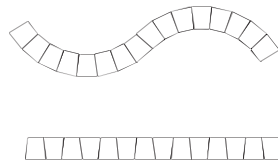
Corner Block



Wall Cap Blocks

Wall Caps are used to finish the top of a wall panel. Secure them in place with masonry adhesive (adhesive optional).

Top view of Wall Caps



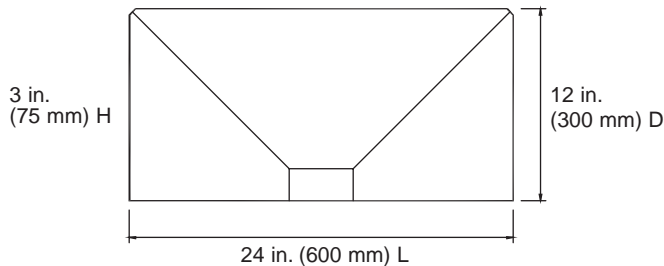
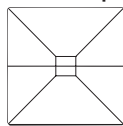
Wall Cap



Post Cap Blocks

Post Caps are used to finish the top of a post. Two Post Caps are used to finish each post. Secure them in place with masonry adhesive (adhesive optional).

Top view of Post Caps

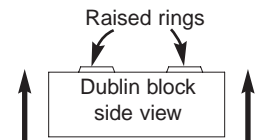


Post Cap



Block Use Tips:

- In most cases, Dublin and York blocks should be laid with the raised rings facing up. This creates an interlock between the courses that adds stability to the wall panel.
- Blocks can also be used with the raised rings facing down. If at the end of your project you need a block angled opposite of what you have left just flip the block upside down.
- Use a York block to switch the angle orientation of the wall.



All specifications are approximate, contact your local distributor for exact dimensions.

For a complete library of Courtyard Collection How-to sheets visit allanblock.com



allanblock.com