

Garden Wall Installation Guide Up to 36 in. (900 mm)



allanblock.com



After



Before

Prepare The Base

- Choose the best AB block for your project and verify if it is under the maximum wall height shown in the chart with the soil it will be built in. If taller than the heights shown, see the Landscape Wall Installation Guide for information or go to allanblock.com.
- Use a garden hose or temporarily lay out the first course of blocks to mark the location of the wall. Remove the sod and other surface material.
- Dig a shallow trench to create the foundation. For **AB Garden Accent** dig a 10 - 12 in. (250 - 300 mm) wide trench that is 4 in. (100 mm) deep. For **AB Junior** dig a 10 - 12 in. (250 - 300 mm) wide trench that is at least 6 in. (150 mm) deep. For **AB Jumbo** dig a 12 in. (300 mm) wide trench that is at least 6 in. (150 mm) deep. On sloped sites, "step up" the trench when it gets more than 6 in. (150 mm) deep for AB Garden Accent and 8 in. (200 mm) for AB Junior and AB Jumbo.
- Place wall rock in the trench, level and compact thoroughly with a hand tamper. For **AB Garden Accent** place 2 in. (50 mm) of wall rock. For **AB Junior** and **AB Jumbo** place 4 in. (100 mm) of wall rock. It is essential that the base is level at this point, as errors will multiply as each new course is added. On larger projects, consider using a mechanical plate compactor for best results when leveling.

Maximum Wall Heights for AB Garden Walls			
Soil Type	AB Garden Accent	AB Junior	AB Jumbo
Sandy Soils	24 in. (600 mm)	30 in. (750 mm)	36 in. (900 mm)
Clay Soils	16 in. (400 mm)	24 in. (600 mm)	22 in. (550 mm)



Layout and mark wall location.



Install wall rock, level and compact.



Backfill behind and in blocks, level and compact. Sweep top of blocks.



Backfill behind and in blocks, level and compact. Sweep top of blocks.

Install the Block

- Starting at the lowest point of the trench, begin placing the first course of block on the base with the raised front lip facing up and forward. Level each block from side to side and front to back, using the rubber mallet to make adjustments.
- With the base course in place, carefully fill in the blocks and behind the blocks 4 - 6 in. (100 - 150 mm) with wall rock. Use on-site soil to fill in front of the block, and behind the wall rock to the same level as the top of the block. If installing pavers behind the block, be sure to prepare the paver base properly.
- Compact thoroughly with a hand tamper or plate compactor. Good compaction is key to a quality job. Sweep the top of the blocks clean, and check again for level.

- Place the next course of blocks with the seams offset from the course below by 2 - 4 in. (50 - 100 mm). This will make the wall stronger and lock each course more tightly in place. Backfill again with wall rock and appropriate soils to the top of the second course.
- Compact again and repeat to the top of the wall.



Offset the blocks

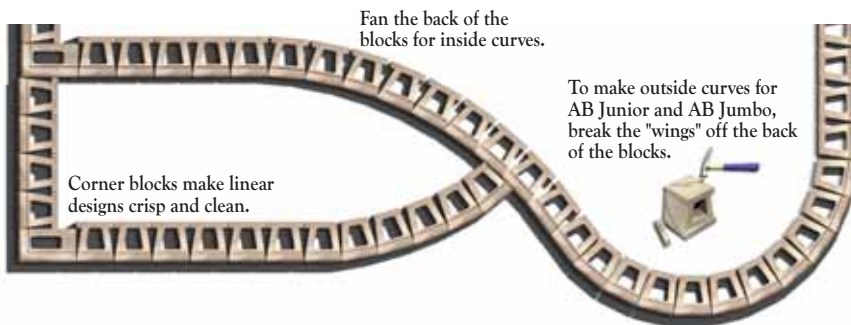
Finish the Wall

To finish your AB Garden Accent project, use the AB Garden Accent capstone. Apply construction adhesive between and underneath the caps to secure them in place. AB Junior and AB Jumbo have several options for finishing the top of the wall.

- Fill in the top course with planting soil or mulch, and use the raised front lip as a finished edge. No caps required.
- Use the two-way cap for a clean, finished look. Glue caps in place.
- Mitred corners will give 90° corners a perfect finish with some cutting.
- AB 12 in. Straight Caps provide the extra depth needed for comfortable stair treads. Be sure to fasten securely with adhesive.



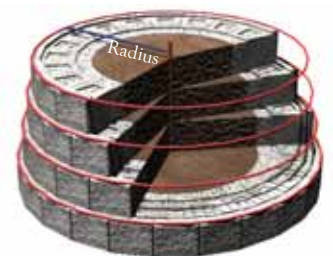
Curves and Corners



AB Garden Accent		AB Junior		AB Jumbo	
Outside radius	# of blocks for full circle	Outside radius	# of blocks for full circle	Outside radius	# of blocks for full circle
30 in. (750 mm)	23	28 in. (700 mm)	22	30 in. (750 mm)	22
Radius is the same on every course for AB Garden Accent		29 in. (725 mm)	23	31.5 in. (790 mm)	24
		30 in. (750 mm)	24	33 in. (825 mm)	25
		31 in. (775 mm)	25	34.5 in. (860 mm)	26

Radius

A coning effect happens as the blocks are stacked up in curved walls. The tightest curve for AB Junior is 28 in. (700 mm), and 30 in. (750 mm) for AB Jumbo for the top course. By adding 1 in. (25 mm) for AB Junior and 1.5 in. (38 mm) for AB Jumbo to each courses radius below, the tightest curve can be obtained at the top of the wall.

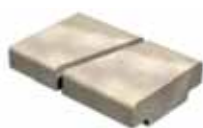


Cap Options

For more information on caps and corners go to allanblock.com

Two-Way Cap

Use with AB Junior



Approx. Dimensions:

H: 2 1/2 in. (65 mm)

W: 5 5/8 in. (140 mm)

7 5/8 in. (190 mm)

D: 8 3/8 in. (210 mm)

Weight: 10 lbs. each (4.5 kg)

AB 12 in. Straight Cap

Use with AB Jumbo



Approx. Dimensions:

H: 3 5/8 in. (90 mm)

W: 11 1/4 in. (280 mm)

D: 11 1/4 in. (280 mm)

Weight: 35 lbs. (16 kg)

Available in BC and AB locations only.

AB Stone 18 in. Cap

Use with AB Jumbo



Approx. Dimensions:

H: 3 5/8 in. (90 mm)

W: 17 5/8 in. (440 mm)

D: 11 7/8 in. (300 mm)

Weight: 50 lbs. (23 kg)

Available in AB and MB locations only.